

## Photo DMOS-FET Relay

### Description

The **LT891** is a 1-Form A solid state relay in an 6 pin DIP package that employs optically coupled MOSFET technology to provide 3750V/5000V of input to output isolation. The optically coupled input is controlled by a highly efficient GaAlAs infrared LED and MOS FETs on the output side.

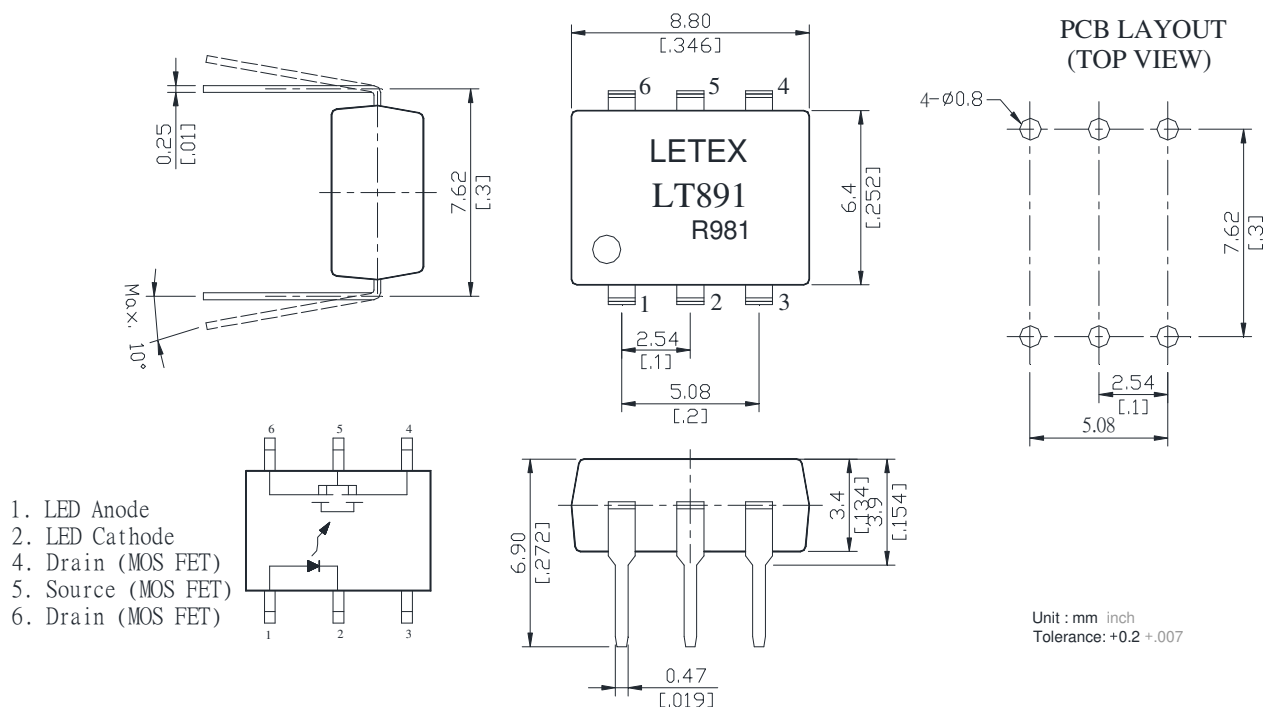
### Features

- Low driver power requirements (TTL/CMOS Compatible)
- No moving parts
- High reliability
- Arc-Free with no snubbing circuits
- 3750 / 5000 Vrms Input/Output isolation

### Applications

- Telecommunications (PC, Electronic notepad)
- Measuring and Testing equipment
- Industrial control
- Automatic meter reading device
- High speed inspection machine Arc-Free with no snubbing circuits

### Outline Dimensions



Unit : mm inch  
Tolerance: +0.2 +.007

## Photo DMOS-FET Relay Specifications

### Part Name: LT891

(Load voltage: 1500V / Load current: 25mA)

Absolute Maximum Ratings (Ambient Temperature: 25°C)

Item		Symbol	Value	Units	Note
Input	Continuous LED Current	I <sub>F</sub>	50	mA	
	Peak LED Current	I <sub>FP</sub>	1000	mA	f=100Hz, duty=1%
	LED Reverse Voltage	V <sub>R</sub>	5	V	
	Input Power Dissipation	P <sub>In</sub>	75	mW	
Output	Load Voltage	V <sub>L</sub>	1500	V(AC peak or DC)	
	Load Current	I <sub>L</sub>	25	mA	A (AC)
			30	mA	B (DC)
			50	mA	C (DC)
	Peak Load Current	I <sub>Peak</sub>	100	mA	100ms(1 pulse)
Output Power Dissipation	P <sub>out</sub>	360	mW		
Total Power Dissipation		P <sub>T</sub>	410	mW	
I/O Breakdown Voltage		V <sub>I/O</sub>	3750	V <sub>rms</sub>	RH=60%, 1min
I/O Breakdown Voltage(Suffix-V)		V <sub>I/O</sub>	5000	V <sub>rms</sub>	RH=60%, 1min
Operating Temperature		T <sub>opr</sub>	-40 to +85	°C	
Storage Temperature		T <sub>stg</sub>	-40 to +100	°C	
Pin Soldering Temperature		T <sub>sol</sub>	260	°C	10 sec max.

Electrical Specifications (Ambient Temperature: 25°C)

Item		Symbol	MIN.	TYP.	MAX.	Units	Conditions
Input	LED Forward Voltage	V <sub>F</sub>		1.3	1.5	V	I <sub>F</sub> =10mA
	Operation LED Current	I <sub>F on</sub>		0.8	5.0	mA	
	Recovery LED Current	I <sub>F off</sub>		0.5	0.8	mA	
	Recovery LED Voltage	V <sub>F off</sub>	0.7			V	
Output	On-Resistance	R <sub>on</sub>		260	290	Ω	I <sub>F</sub> =10mA, I <sub>L</sub> = Rating, Time to flow is within 1 sec.
				370	420	Ω	I <sub>F</sub> =10mA, I <sub>L</sub> < 5mA
	Off-State Leakage Current	I <sub>Leak</sub>			10	uA	V <sub>L</sub> =Rating
	Output Capacitance	C <sub>out</sub>		35		pF	V <sub>L</sub> =0, f=1MHz
Transmis sion	Turn-On Time	T <sub>on</sub>		0.1	0.5	ms	I <sub>F</sub> =10mA, I <sub>L</sub> =Rating
	Turn-Off Time	T <sub>off</sub>		0.06	0.1	ms	
Coupled	I/O Isolation Resistance	R <sub>I/O</sub>	10 <sup>10</sup>			Ω	DC500V
	I/O Capacitance	C <sub>I/O</sub>		0.8	1.5	pF	f=1MHz

## Reference Data

