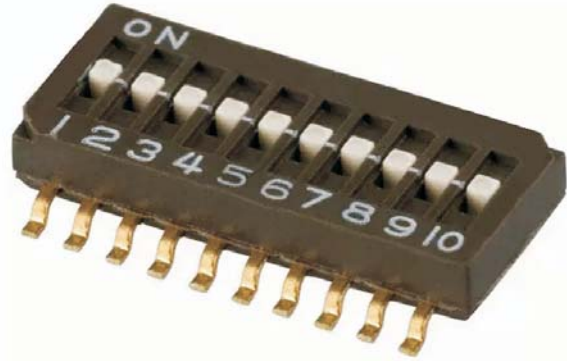


**DIP Switch Series**

**KLS7-KPR 1.27mm Half Pitch DIP Switch Series**

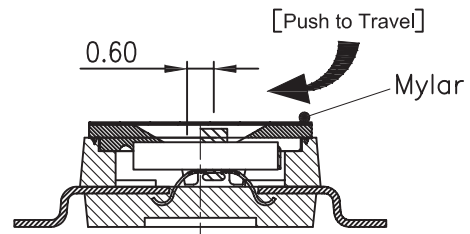
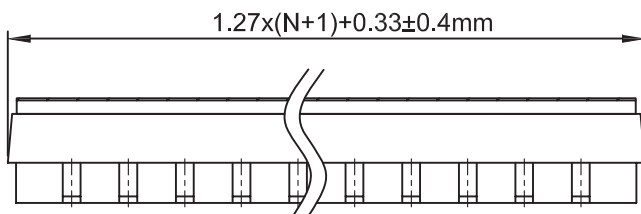
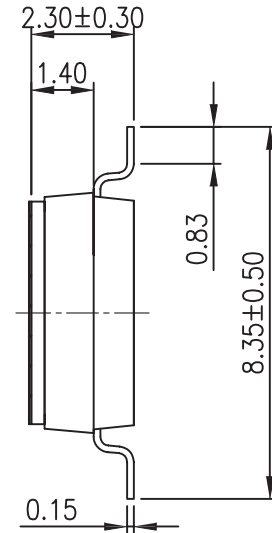
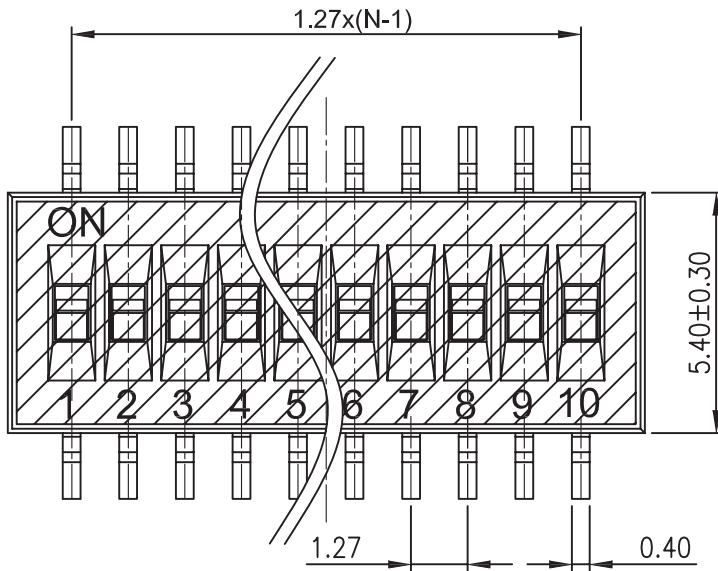
Specifications

- Contact Rating: 25 mA at 24VDC (switching)  
100 mA at 50VDC (steady state)
- Life: 1,000 cycles
- Contact Resistance: 100mΩ Max.
- Insulation Resistance: 100MΩ at 100VDC Min
- Dielectric Strength: 300VAC Min
- Storage Temperature: -40°C ~ 85°C
- Operating Temperature: -40°C to 85°C.
- Operation Force: 9.8N Max.



Materials

- Base & Cover: PPS (UL94V-0)
- Actuator: PA46 (UL94V-0).
- Contacts: Brass, Gold /Tin Plate
- Terminals: Brass, Gold /Tin Plate
- Mylar: 0.05mm UL94V-0 Mylar



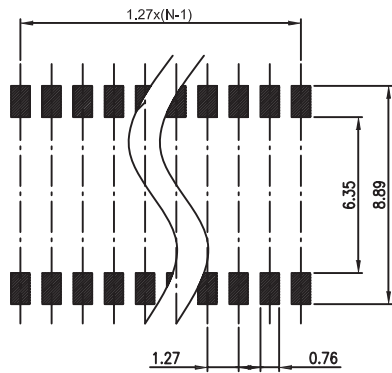
**ORDER INFORMATION**

**KLS7-KPR-XX-N-10**

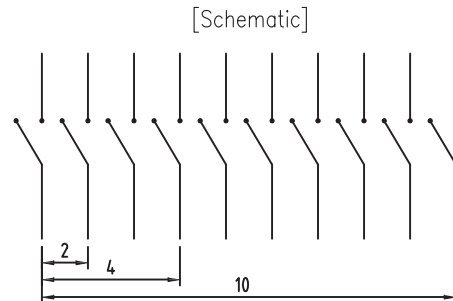
- Part Number
- KPR: 1.27mm Half Pitch Dip Switch
- Number of Pos.: 02~10 Pos.
- Packaging: 0=Tube 1=Tape
- 1: With sealed
- Color: N=Black

**DIP Switch Series**

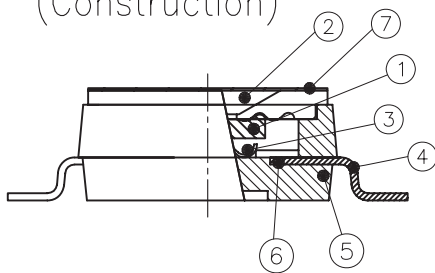
**KLS7-KPR 1.27mm Half Pitch DIP Switch Series**



RECOMMENDED P.C.B. LAYOUT (TOP VIEW)



(Construction)



Number	Part Name	Material	Finished
①	Actuator	UL94 V0	White
②	Cover	UL94 V0	Black
③	Movable	Beryllium Copper	3μ' Gold
④	Terminal	Brass	1μ' Gold
⑤	Base	UL94 V0	Black
⑥	Terminal Contact	Brass	3μ' Gold
⑦	Mylar	UL94 V0	0.05mm

**ORDER INFORMATION**

**KLS7-KPR-XX-N-10**

Part Number \_\_\_\_\_  
 KPR: 1.27mm Half Pitch \_\_\_\_\_  
 Dip Switch \_\_\_\_\_  
 Number of Pos.: 02~10 Pos. \_\_\_\_\_  
 Packaging: 0=Tube 1=Tape \_\_\_\_\_  
 1: With sealed \_\_\_\_\_  
 Color: N=Black \_\_\_\_\_