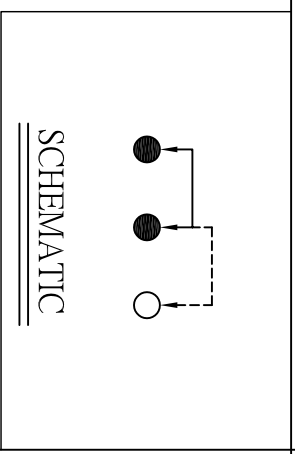
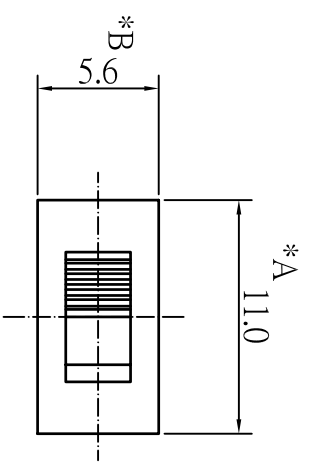


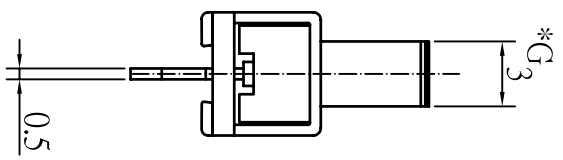
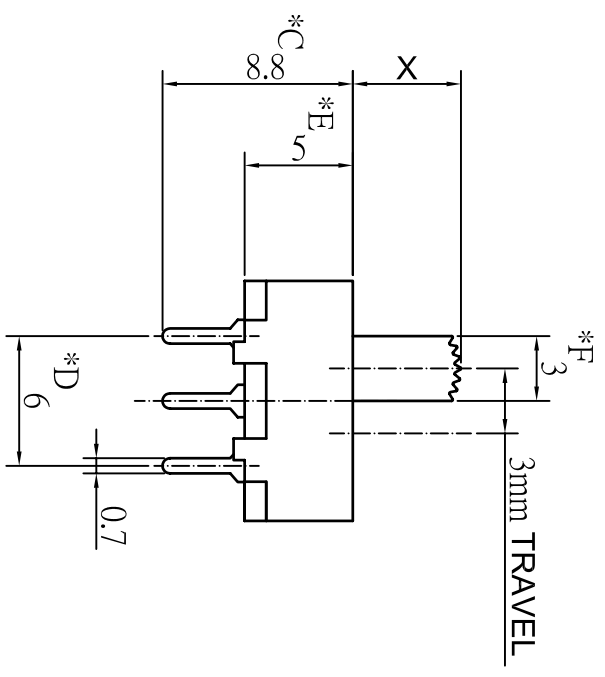
1 2 3 4

A



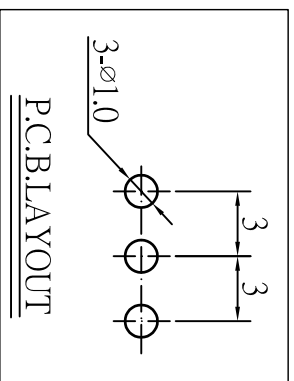
A

B



B

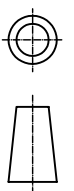
C



C

D

# CHI FUNG ELECTRONICS CO.,LTD.



SERIES : SLIDE KNOB SWITCH  
 DRAWING NO. : CF-ENT-SSV4013-2

PART NAME: SSV-12H7-GX  
 GENERAL TOLERANCE

UNIT : MM  
 SCALE : 3:1  
 REV : A/0

WITHIN 0.XXmm±0.15mm  
 OVER 0.Xmm±0.25mm

7			
6	SPRING	STEEL WIRE	1
5	CONTACT	BRASS	1
4	TERMINAL	BRASS	3
3	BASE	PHENOLIC RESIN	1
2	FRAME	SPN	1
1	KNOB	POM	1

NO.	PART NAME	MATERIAL	QTY	FINISHING

D

1 2 3 4

\* CRITICAL DIMENSION