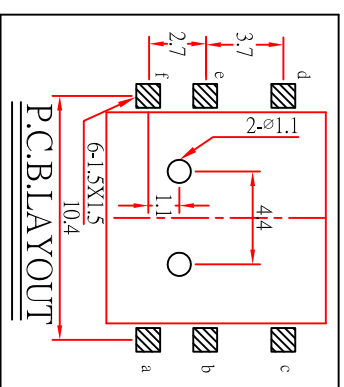
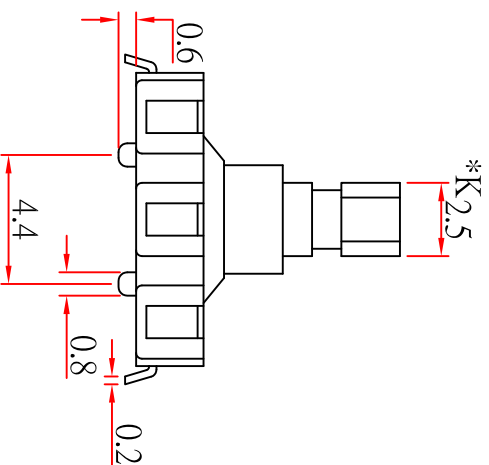
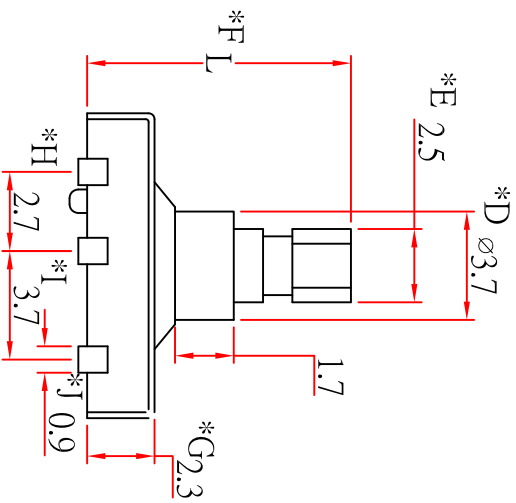


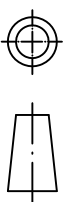
L=	5mm
	7mm
	9mm



* CRITICAL DIMENSION

CHI FUNG ELECTRONICS CO.,LTD.

SERIES : TACT SWITCH	DRAWING NO. : CF-ENT-TS4172
PART NAME : TS-1500-L	GENERAL TOLERANCE
UNIT : M/M	WITHIN 0.0XXmm±0.15mm
SCALE : 4:1	OVER 0.Xmm±0.25mm
REV : A/0	



7			
6	TERMINAL	PBS STRIP	Ag COATING
5	CASE	PA66	BLACK
4	CONTACT	SUS	Ag CLAD
3	COVER	SPN STRIP	NI COATING
2	STEM	PA66	BLACK
1	PART NAME	MATERIAL	FINISHING