


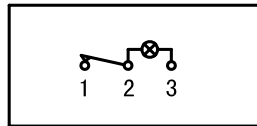


- * Product Name: Rocker Switch;
- * Model No: YSR-11
- * Voltage Resistance: 2000VAC, 1MIN;
- * Operating Temperature: T85 T105
- * Electrical Life: more than 10,000cycles
- * Contact Rating: UL CUL: 3/6A 250/125VAC, 5/10A 250/125VAC
6.5/13A 250/125VAC, 10/15A 250/125VAC
15/20A 250/125VAC, 1/3HP 125VAC
VDE: 3 (1) A 250V ~ , 6 (2) A 250V ~ , 10 (4) A 250V ~

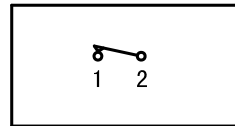


KNOB COLOR	BLACK; RED; GREEN; ORANGE; BLUE; ...		
BASE COLOR	GRAY; BLACK; WHITE; ...		
KNOB SHAPE	TYPE C: 		
Illuminate	YSR-11-11/N 1P1T 3P	Unilluminate	YSR-11-11 1P1T 2P

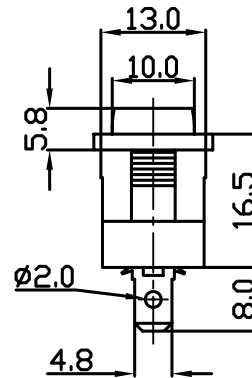
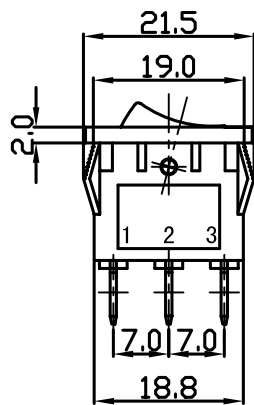
Wiring Diagram



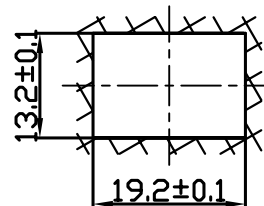
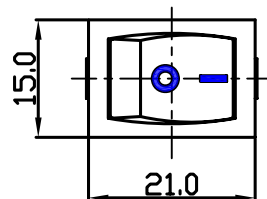
YSR-11-11/N
On-Off (Illuminate)



YSR-11-11
On-Off (Unilluminate)



Panel Installation Size



Panel Installation
Thickness 1 ~ 4mm