



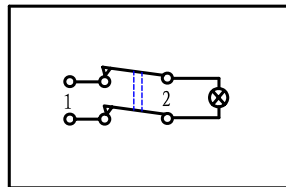


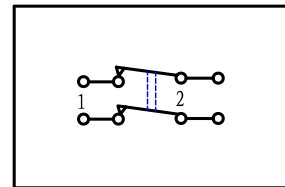


<ul style="list-style-type: none"> * Product Name: Rocker Switch; * Model No: YSR-9-21 (C) * Voltage Resistance: 2000VAC, 1MIN; * Operating Temperature: T85 T105 * Electrical Life: more than 10,000cycles * Contact Rating: UL、CUL: 10/15A 250/125VAC 16/20A 250/125VAC 1/2HP VDE: 10 (4) A 250V ~ 16 (6) A 250V ~ 						China, Korean Patent	
KNOB COLOR	BLACK; RED; GREEN; ORANGE; BLUE;...						
BASE COLOR	GRAY; BLACK; WHITE;...						
KNOB SHAPE	TYPE C: 		TYPE D: 		TYPE E: 		
Illuminate	YSR-9-21 (C) /N 2P1T 4P		Unilluminate		YSR-9-21 (C) 2P1T 4P		

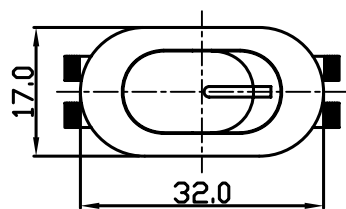
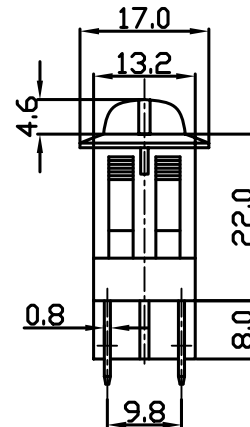
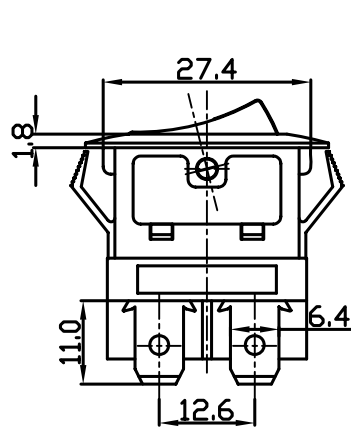
Wiring Diagram



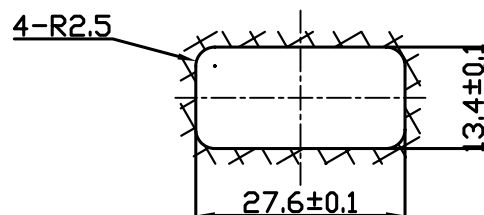
YSR-9-21 (C) /N
On-Off (Illuminate)



YSR-9-21 (C)
On-Off (Unilluminate)



Panel Installation Size



Panel Installation
Thickness 1 ~ 4mm