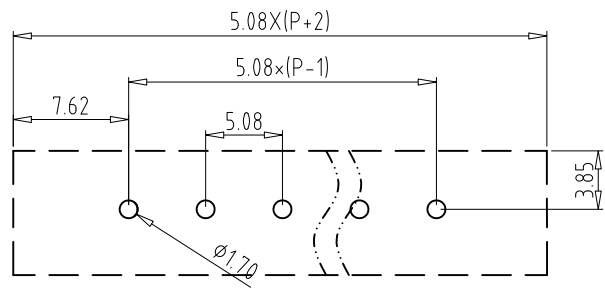
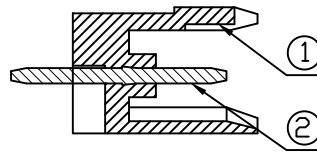


REV	CONTENT	CHK	DATE
V0.0	CONTENT	MYZ	21.07.08



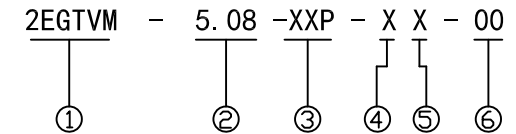
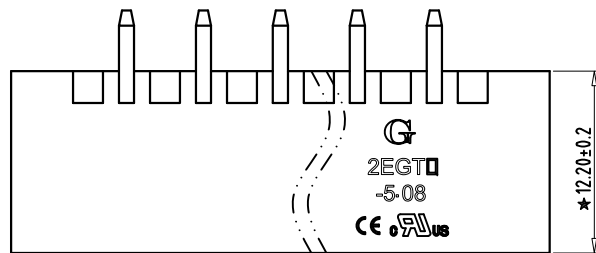
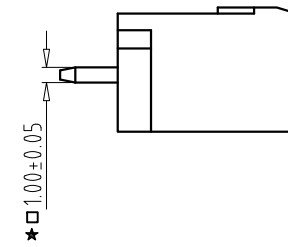
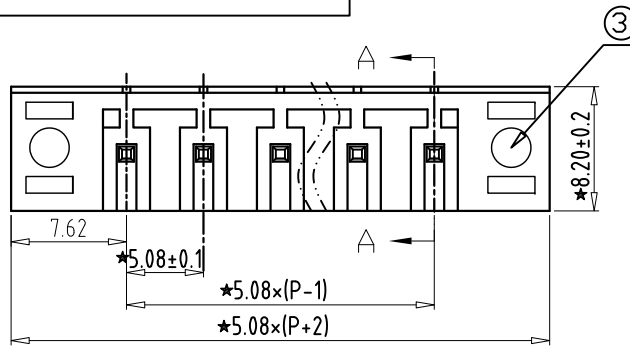
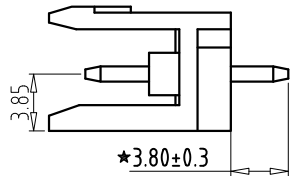
PCB LAYOUT



SECTION A-A

**Electrical :**

- |   |               |      |
|---|---------------|------|
|   | UL            | IEC  |
| 1.Rated Voltage :                         | 300V          | 320V |
| 2.Rated Current :                         | 15A           | 20A  |
| 3.Withstanding Voltage :                  | AC1600V/1Min; |      |
| 4.Operating Temperature :                 | -40°C~+105°C; |      |
| 5. RoHS Compliance;                       |               |      |
| 6.Safety Approval :                       | cULus CE      |      |
| 7." ★ " is the key quality control point. |               |      |



- ① Series NO.      ④ 1 Single Pitch  
                             2 Double Pitch
- ② Pitch              ⑤ Color: 1 Grey  
                             2 Blue  
                             3 Black  
                             4 Green  
                             5 Orange  
                             6 Red  
                             7 Transparent  
                             8 Yellow  
                             9 White
- ⑥ Customer Request: 00-- Standard

3	NUT	XX	2	BRASS	/
2	PIN	XX	P	BRASS	Tin Plated
1	HOUSING	XX	1	PA66 UL94V-0	SEE NOTE

ITEM	NAME OF PART	NO. OF PART	Q'TY	MATERIAL	NOTE
DWG.	MYZ	DATE	21.07.08	SIZE	A4 UNITS mm SHEET/OF 1/1
CHK.		DATE		SCALE	1:1
APP.		DATE		NAME	2EGTVM-5.08-XXP-XX-00
				DWGNO.	XXXX

Total Pitch Tolerances in mm										Nominal dimension range in mm											⊥	≡	—	//					
over 0	over 30	over 53	over 70	over 90	over 115	over 150	over 250	over 350	over 500	over 0	over 30	over 53	over 70	over 90	over 115	over 150	over 200	over 250	over 320	over 0	over 10	all	over 0	over 100	over 150				
±0.18	±0.20	±0.25	±0.3	±0.35	±0.4	±0.6	±0.70	±0.85	±0.20	±0.25	±0.30	±0.35	±0.4	±0.55	±0.70	±0.80	±0.90	0.2	0.3	0.3	0.2	0.3	0.5						