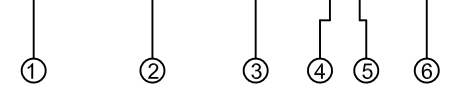


REV	CONTENT	CHK	DATE
V0.0	CONTENT	MYZ	21.07.01

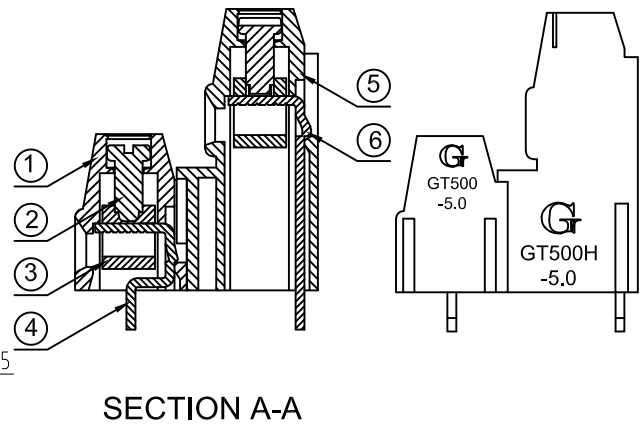
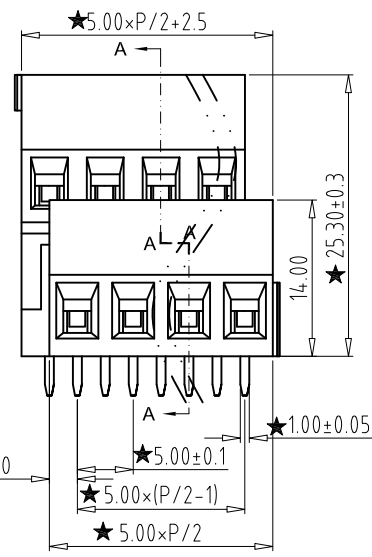
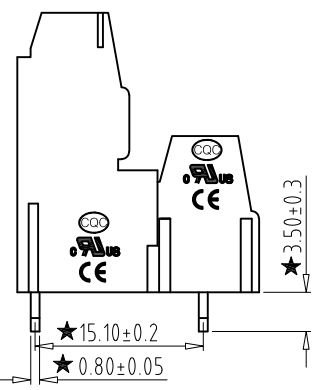
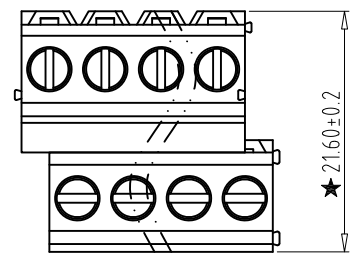
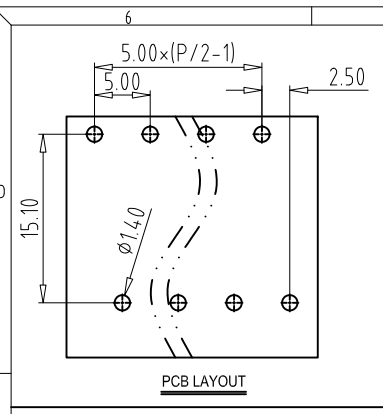
**Electrical :**

- |   |                  |                        |
|---|------------------|------------------------|
|   | UL               | IEC                    |
| 1. Rated Voltage :                        | 300V             | 250V                   |
| 2. Rated Current :                        | 20A              | 24A                    |
| 3. Torque Value :                         | M2.5 , 3.54Lb.in | M2.5 , 0.4N.m          |
| 4. Wire Range:                            | 28-12AWG         | 0.5-2.5mm <sup>2</sup> |
| 5. Stripping Length :                     | 6-7mm            |                        |
| 6. Withstanding Voltage :                 | AC2000V/1Min.    |                        |
| 7. Operating Temperature :                | -40°C~+105°C     |                        |
| 8. RoHS Compliance                        |                  |                        |
| 9. Safty Approval :                       | UL CE            |                        |
| 10. "★" is the key quality control point. |                  |                        |

GT500A - 5.0 - XXP - X X - 00



- ① Series No.    ④ 1 Single Pitch  
                                2 Double Pitch
- ② Pitch                                    ⑤ Color: 1 Grey  
  2 Blue  
  3 Black  
  4 Green  
  5 Orange  
  6 Red  
  7 Transparent  
  8 Yellow  
  9 White
- ③ Poles  
02 02Contacts  
03 03Contacts  
...  
24 24Contacts
- ⑥ Customer Request : 00--Standard



Total Pitch Tolerances in mm										Nominal dimension range in mm										⊥	≡	-	//		
over 0	over 30	over 53	over 70	over 90	over 115	over 150	over 250	over 350	over 500	over 0	over 30	over 53	over 70	over 90	over 115	over 150	over 200	over 250	over 320	0	over 10	all	over 0	over 100	over 150
±0.18	±0.20	±0.25	±0.3	±0.35	±0.44	±0.60	±0.70	±0.85	±0.20	±0.25	±0.30	±0.35	±0.44	±0.55	±0.70	±0.80	±0.90	0.2	0.3	0.3	0.3	0.2	0.3	0.5	

6	PIN 2	XX	P/2	BRASS	Tin Plated
5	HOUSING 2	XX	1	PA66 UL94V-0	SEE NOTE
4	PIN 1	XX	P/2	BRASS	Tin Plated
3	CAGE	XX	P	BRASS	Ni Plated
2	SCREW	XX	P	STEEL	Zn Plated
1	HOUSING 1	XX	1	PA66 UL94V-0	SEE NOTE
ITEM	NAME OF PART	NO. OF PART	Q'TY	MATERIAL	NOTE
DWG.	MYZ	DATE	21.07.01	SIZE	A4 UNITS mm SHEET/OF 1/1
CHK.		DATE		SCALE	1:1
APP.		DATE		NAME	GT500A-5.0-XXP-XX-00
				DWGNO.	XXXX

**Grolten** 宁波冠泰电子有限公司  
NINGBO GOLTEN ELECTRONICS CO., LTD.