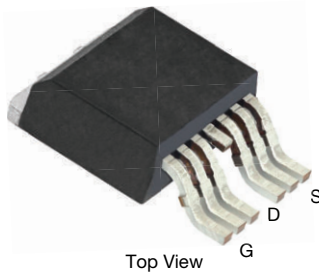


Automotive N-Channel 40 V (D-S) 175 °C MOSFET

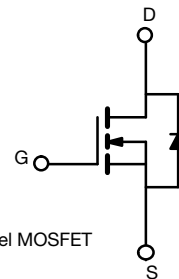
TO-263 7-Lead



FEATURES

- TrenchFET® power MOSFET
- Package with low thermal resistance
- 100 % R_g and UIS tested
- AEC-Q101 qualified
- Material categorization:
for definitions of compliance please see www.vishay.com/doc?99912

 AUTOMOTIVE
GRADE

RoHS
COMPLIANT
HALOGEN
FREE


N-Channel MOSFET

PRODUCT SUMMARY	
V _{DS} (V)	40
R _{DS(on)} (Ω) at V _{GS} = 10 V	0.00100
I _D (A)	200
Configuration	Single
Package	TO-263-7L

ABSOLUTE MAXIMUM RATINGS (T _C = 25 °C, unless otherwise noted)				
PARAMETER		SYMBOL	LIMIT	UNIT
Drain-source voltage		V _{DS}	40	V
Gate-source voltage		V _{GS}	± 20	
Continuous drain current ^a	T _C = 25 °C	I _D	200	A
	T _C = 125 °C		200	
Continuous source current (diode conduction) ^a		I _S	200	
Pulsed drain current ^b		I _{DM}	260	
Single pulse avalanche current	L = 0.1 mH	I _{AS}	100	
Single pulse avalanche energy		E _{AS}	500	mJ
Maximum power dissipation ^b	T _C = 25 °C	P _D	375	W
	T _C = 125 °C		125	
Operating junction and storage temperature range		T _J , T _{stg}	-55 to +175	°C

THERMAL RESISTANCE RATINGS				
PARAMETER		SYMBOL	LIMIT	UNIT
Junction-to-ambient	PCB mount ^c	R _{thJA}	40	°C/W
Junction-to-case (drain)		R _{thJC}	0.4	

Notes

- Package limited
- Pulse test; pulse width ≤ 300 μs, duty cycle ≤ 2 %
- When mounted on 1" square PCB (FR4 material)



SPECIFICATIONS (T _C = 25 °C, unless otherwise noted)							
PARAMETER	SYMBOL	TEST CONDITIONS		MIN.	TYP.	MAX.	UNIT
Static							
Drain-source breakdown voltage	V _{DS}	V _{GS} = 0 V, I _D = 250 μA		40	-	-	V
Gate-source threshold voltage	V _{GS(th)}	V _{DS} = V _{GS} , I _D = 250 μA		2.5	3.0	3.5	
Gate-source leakage	I _{GSS}	V _{DS} = 0 V, V _{GS} = ± 20 V		-	-	± 100	nA
Zero gate voltage drain current	I _{DSS}	V _{GS} = 0 V	V _{DS} = 40 V	-	-	1	μA
		V _{GS} = 0 V	V _{DS} = 40 V, T _J = 125 °C	-	-	50	
		V _{GS} = 0 V	V _{DS} = 40 V, T _J = 175 °C	-	-	300	μA
On-state drain current ^a	I _{D(on)}	V _{GS} = 10 V	V _{DS} ≥ 5 V	100	-	-	A
Drain-source on-state resistance ^a	R _{DS(on)}	V _{GS} = 10 V	I _D = 35 A	-	0.00084	0.00100	Ω
		V _{GS} = 10 V	I _D = 35 A, T _J = 125 °C	-	-	0.00140	
		V _{GS} = 10 V	I _D = 35 A, T _J = 175 °C	-	-	0.00164	
Forward transconductance ^b	g _{fs}	V _{DS} = 15 V, I _D = 30 A		-	196	-	S
Dynamic^b							
Input capacitance	C _{iss}	V _{GS} = 0 V	V _{DS} = 25 V, f = 1 MHz	-	11 938	15 525	pF
Output capacitance	C _{oss}			-	11 163	14 520	
Reverse transfer capacitance	C _{rss}			-	282	370	
Total gate charge ^c	Q _g	V _{GS} = 10 V	V _{DS} = 20 V, I _D = 100 A	-	158	250	nC
Gate-source charge ^c	Q _{gs}			-	44	-	
Gate-drain charge ^c	Q _{gd}			-	22	-	
Gate resistance	R _g	f = 1 MHz		2.70	5.44	8.20	Ω
Turn-on delay time ^c	t _{d(on)}	V _{DD} = 20 V, R _L = 0.2 Ω I _D ≅ 100 A, V _{GEN} = 10 V, R _g = 1 Ω		-	16	25	ns
Rise time ^c	t _r			-	10	17	
Turn-off delay time ^c	t _{d(off)}			-	103	160	
Fall time ^c	t _f			-	61	95	
Source-Drain Diode Ratings and Characteristics^b							
Pulsed current ^a	I _{SM}			-	-	260	A
Forward voltage	V _{SD}	I _F = 60 A, V _{GS} = 0 V		-	0.81	1.5	V
Body diode reverse recovery time	t _{rr}	I _F = 30 A, di/dt = 100 A/μs		-	165	350	ns
Body diode reverse recovery charge	Q _{rr}			-	530	1100	nC
Reverse recovery fall time	t _a			-	66	-	ns
Reverse recovery rise time	t _b			-	99	-	
Body diode peak reverse recovery current	I _{RM(REC)}			-	-6.2	-	A

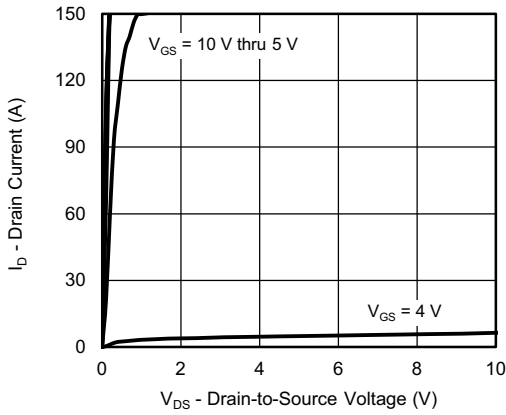
Notes

- a. Pulse test; pulse width ≤ 300 μs, duty cycle ≤ 2 %
- b. Guaranteed by design, not subject to production testing
- c. Independent of operating temperature

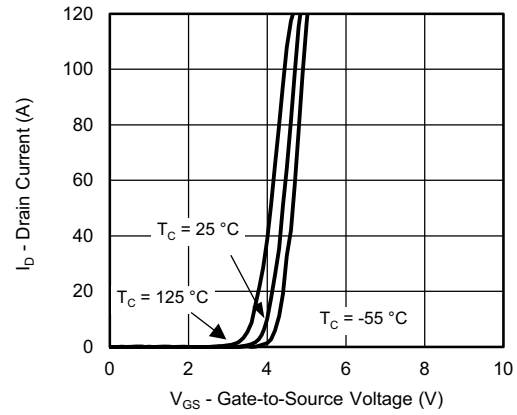
Stresses beyond those listed under "Absolute Maximum Ratings" may cause permanent damage to the device. These are stress ratings only, and functional operation of the device at these or any other conditions beyond those indicated in the operational sections of the specifications is not implied. Exposure to absolute maximum rating conditions for extended periods may affect device reliability.



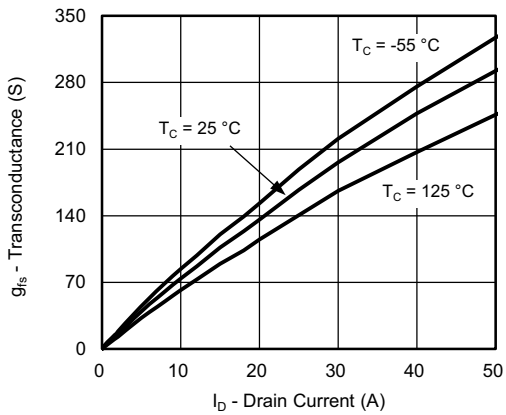
TYPICAL CHARACTERISTICS (T_A = 25 °C, unless otherwise noted)



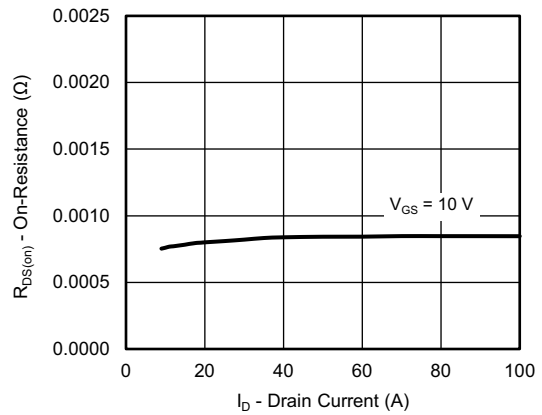
Output Characteristics



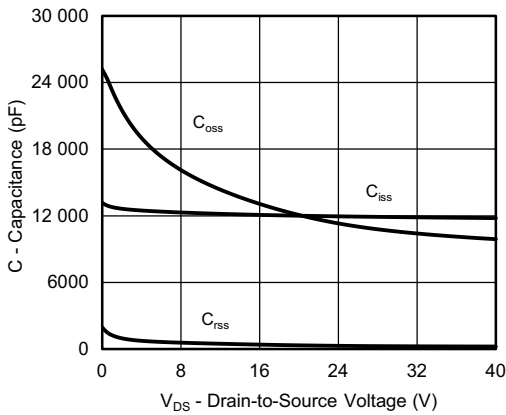
Transfer Characteristics



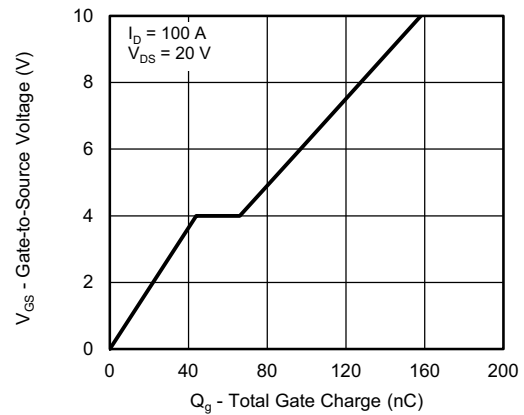
Transconductance



On-Resistance vs. Drain Current



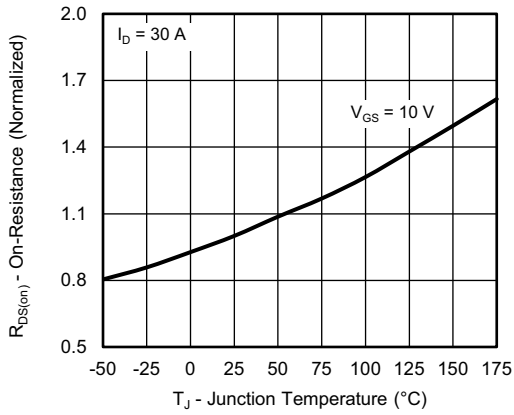
Capacitance



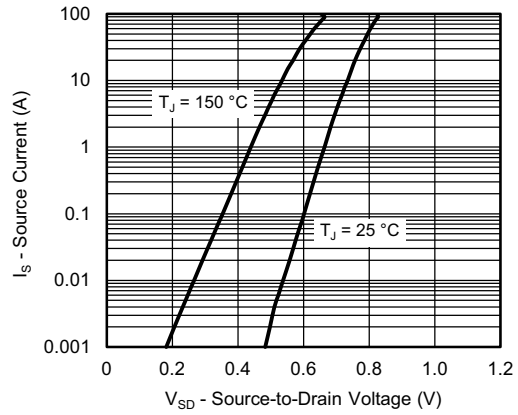
Gate Charge



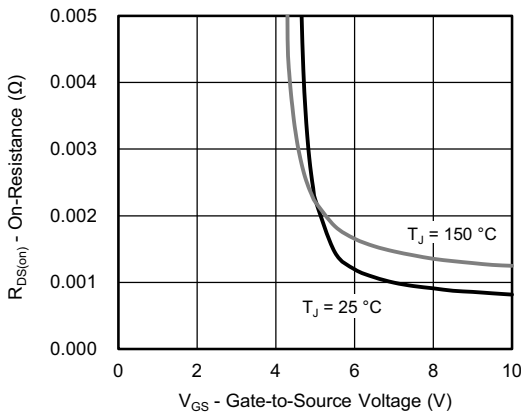
TYPICAL CHARACTERISTICS (T_A = 25 °C, unless otherwise noted)



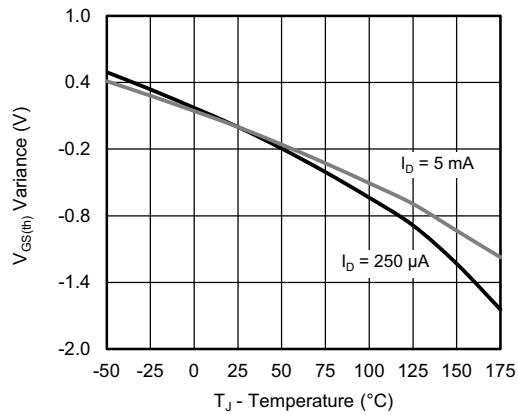
On-Resistance vs. Junction Temperature



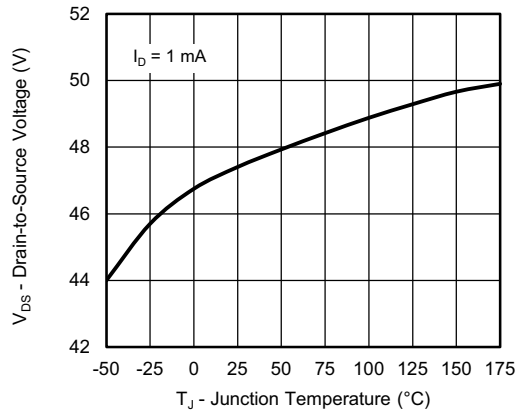
Source Drain Diode Forward Voltage



On-Resistance vs. Gate-to-Source Voltage



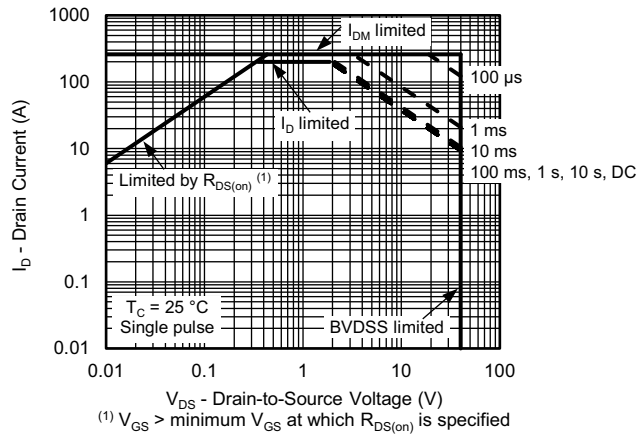
Threshold Voltage



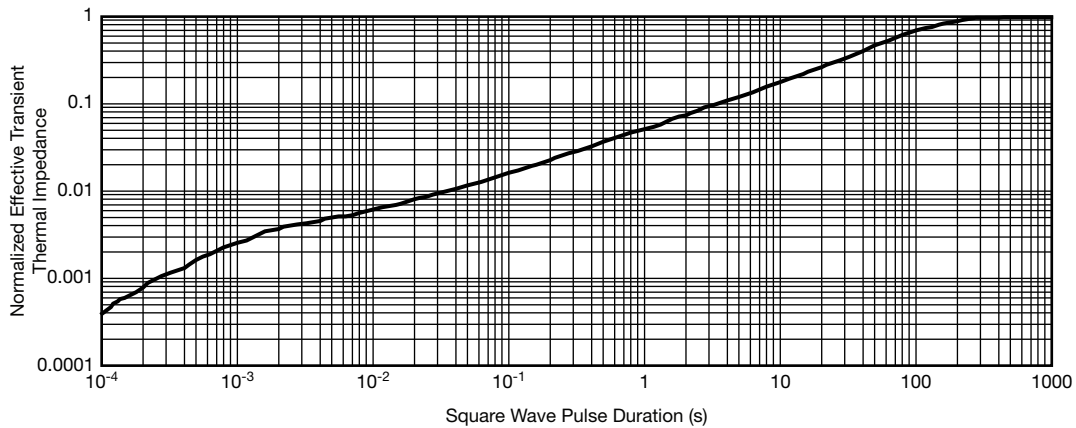
Drain Source Breakdown vs. Junction Temperature



THERMAL RATINGS ($T_A = 25\text{ }^\circ\text{C}$, unless otherwise noted)



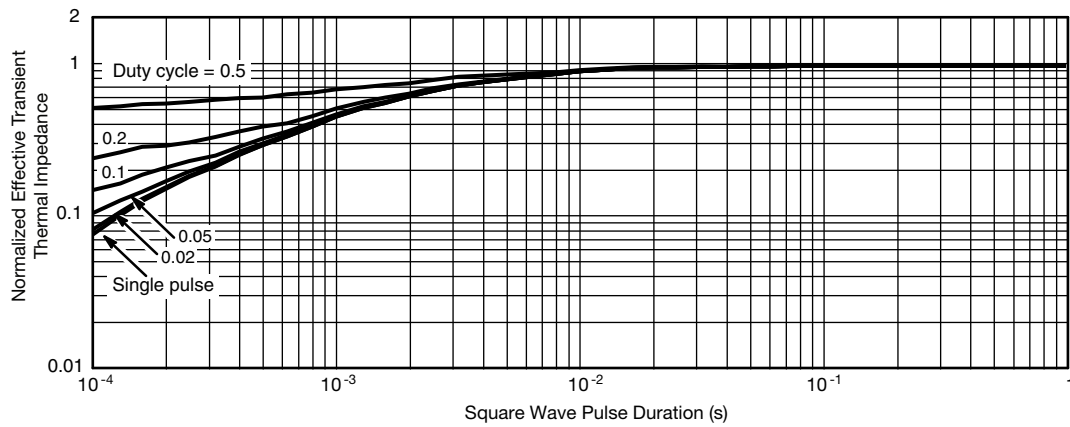
Safe Operating Area



Normalized Thermal Transient Impedance, Junction-to-Ambient



THERMAL RATINGS ($T_A = 25\text{ }^\circ\text{C}$, unless otherwise noted)



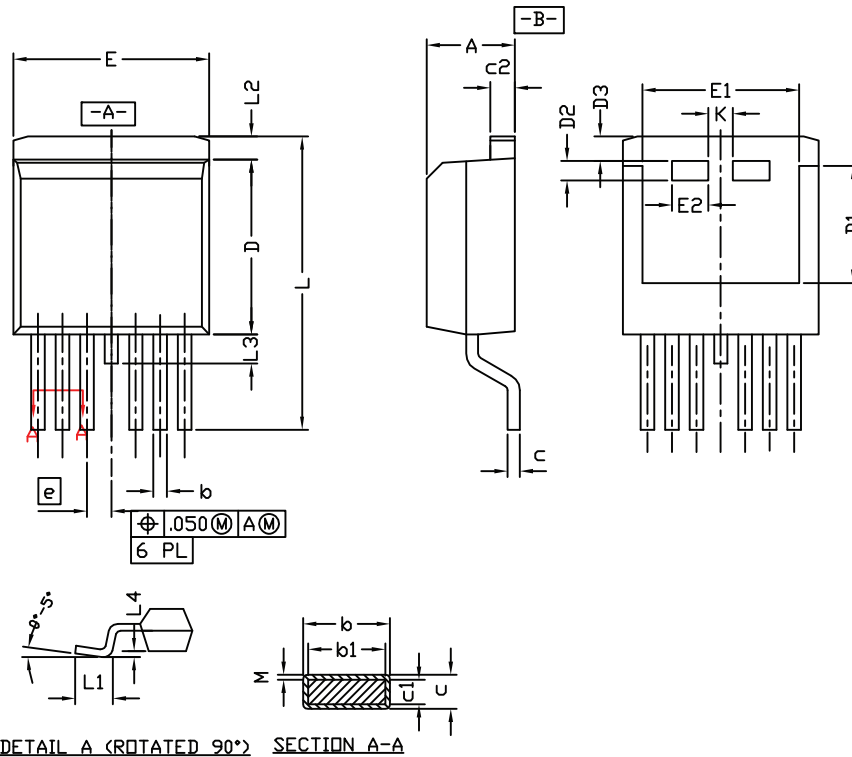
Normalized Thermal Transient Impedance, Junction-to-Case

Note

- The characteristics shown in the two graphs
 - Normalized Transient Thermal Impedance Junction-to-Ambient (25 °C)
 - Normalized Transient Thermal Impedance Junction-to-Case (25 °C)
 are given for general guidelines only to enable the user to get a “ball park” indication of part capabilities. The data are extracted from single pulse transient thermal impedance characteristics which are developed from empirical measurements. The latter is valid for the part mounted on printed circuit board - FR4, size 1" x 1" x 0.062", double sided with 2 oz. copper, 100 % on both sides. The part capabilities can widely vary depending on actual application parameters and operating conditions

Vishay Siliconix maintains worldwide manufacturing capability. Products may be manufactured at one of several qualified locations. Reliability data for Silicon Technology and Package Reliability represent a composite of all qualified locations. For related documents such as package / tape drawings, part marking, and reliability data, see www.vishay.com/ppg?77738.

D²PAK (TO-263-7L) Case Outline

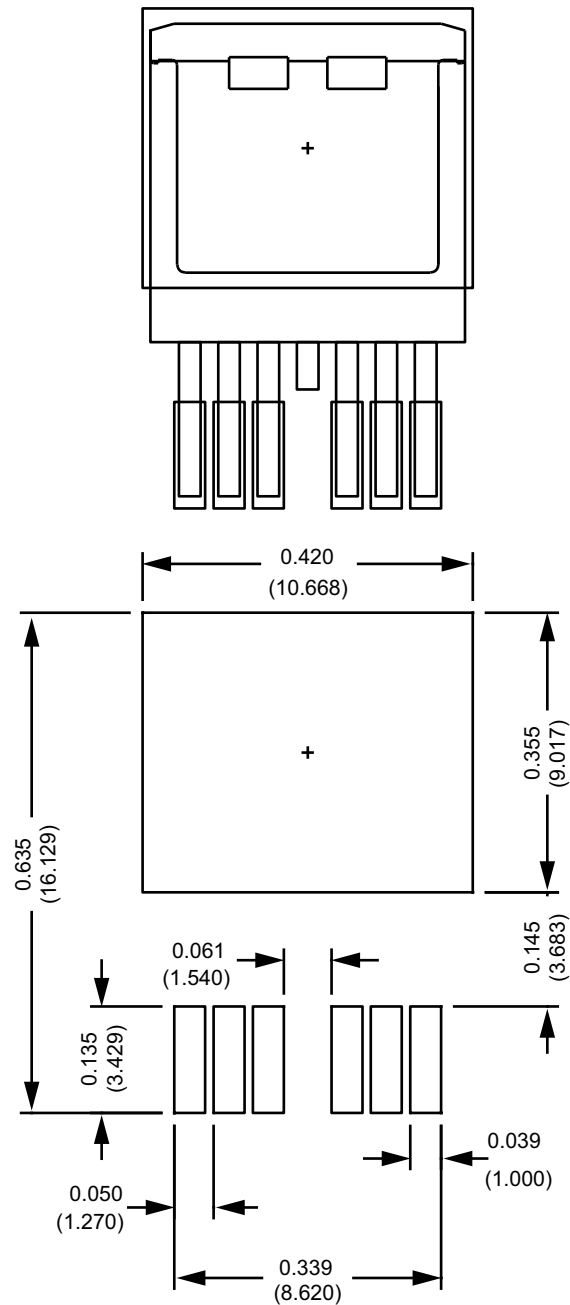


Notes

1. Plane B includes maximum features of heat sink tab and plastic.
2. No more than 25 % of L1 can fall above seating plane by max. 8 mils.
3. Pin to pin coplanarity max. 4 mils.
4. Lead thickness 25 mils.
5. For SUM part numbers lead thickness is 24 mils to 29 mils.
6. For reference only.
7. Use inches as the primary measurement.
8. This feature is only for SUM.

DIM.	INCHES		MILLIMETERS	
	MIN.	MAX.	MIN.	MAX.
A	0.160	0.190	4.064	4.826
b	0.020	0.039	0.508	0.990
b1	0.020	0.035	0.508	0.889
b2	0.045	0.055	1.143	1.397
c* SUB	0.012	0.018	0.305	0.457
c* SUM	0.022	0.028	0.559	0.711
c1	0.018	0.025	0.457	0.635
c2	0.045	0.055	1.143	1.397
D	0.340	0.380	8.636	9.652
D1	0.220	0.240	5.588	6.096
D2	0.038	0.042	0.965	1.067
D3	0.045	0.055	1.143	1.397
E	0.380	0.410	9.652	10.414
E1	0.245	-	6.223	-
E2	0.072	0.078	1.829	1.981
e	0.050 BSC		1.27 BSC	
K	0.045	0.055	1.143	1.397
L	0.575	0.625	14.605	15.875
L1	0.090	0.110	2.286	2.794
L2	0.040	0.055	1.016	1.397
L3	0.050	0.070	1.270	1.778
L4	0.010 BSC		0.254 BSC	
M	-	0.002	-	0.050
ECN: T13-0709-Rev. B, 30-Sep-13				
DWG: 6006				

Recommended Land Pattern D²PAK (TO-263-7L)





Disclaimer

ALL PRODUCT, PRODUCT SPECIFICATIONS AND DATA ARE SUBJECT TO CHANGE WITHOUT NOTICE TO IMPROVE RELIABILITY, FUNCTION OR DESIGN OR OTHERWISE.

Vishay Intertechnology, Inc., its affiliates, agents, and employees, and all persons acting on its or their behalf (collectively, "Vishay"), disclaim any and all liability for any errors, inaccuracies or incompleteness contained in any datasheet or in any other disclosure relating to any product.

Vishay makes no warranty, representation or guarantee regarding the suitability of the products for any particular purpose or the continuing production of any product. To the maximum extent permitted by applicable law, Vishay disclaims (i) any and all liability arising out of the application or use of any product, (ii) any and all liability, including without limitation special, consequential or incidental damages, and (iii) any and all implied warranties, including warranties of fitness for particular purpose, non-infringement and merchantability.

Statements regarding the suitability of products for certain types of applications are based on Vishay's knowledge of typical requirements that are often placed on Vishay products in generic applications. Such statements are not binding statements about the suitability of products for a particular application. It is the customer's responsibility to validate that a particular product with the properties described in the product specification is suitable for use in a particular application. Parameters provided in datasheets and / or specifications may vary in different applications and performance may vary over time. All operating parameters, including typical parameters, must be validated for each customer application by the customer's technical experts. Product specifications do not expand or otherwise modify Vishay's terms and conditions of purchase, including but not limited to the warranty expressed therein.

Hyperlinks included in this datasheet may direct users to third-party websites. These links are provided as a convenience and for informational purposes only. Inclusion of these hyperlinks does not constitute an endorsement or an approval by Vishay of any of the products, services or opinions of the corporation, organization or individual associated with the third-party website. Vishay disclaims any and all liability and bears no responsibility for the accuracy, legality or content of the third-party website or for that of subsequent links.

Except as expressly indicated in writing, Vishay products are not designed for use in medical, life-saving, or life-sustaining applications or for any other application in which the failure of the Vishay product could result in personal injury or death. Customers using or selling Vishay products not expressly indicated for use in such applications do so at their own risk. Please contact authorized Vishay personnel to obtain written terms and conditions regarding products designed for such applications.

No license, express or implied, by estoppel or otherwise, to any intellectual property rights is granted by this document or by any conduct of Vishay. Product names and markings noted herein may be trademarks of their respective owners.